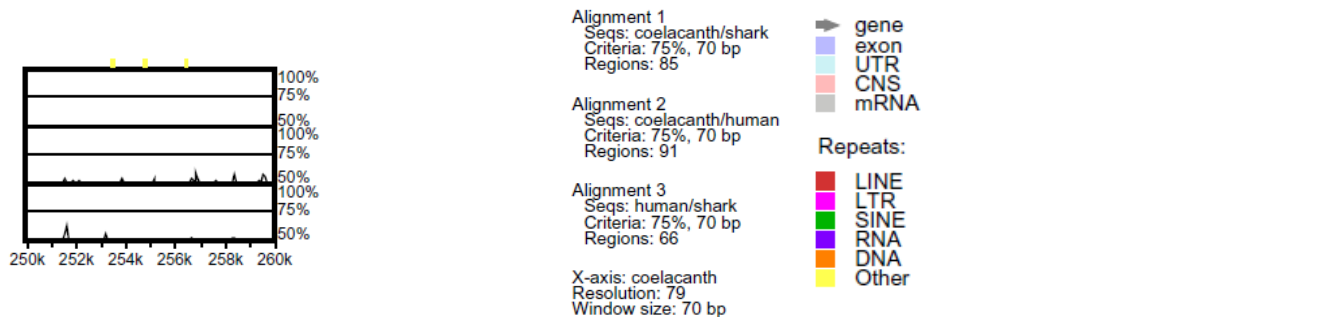
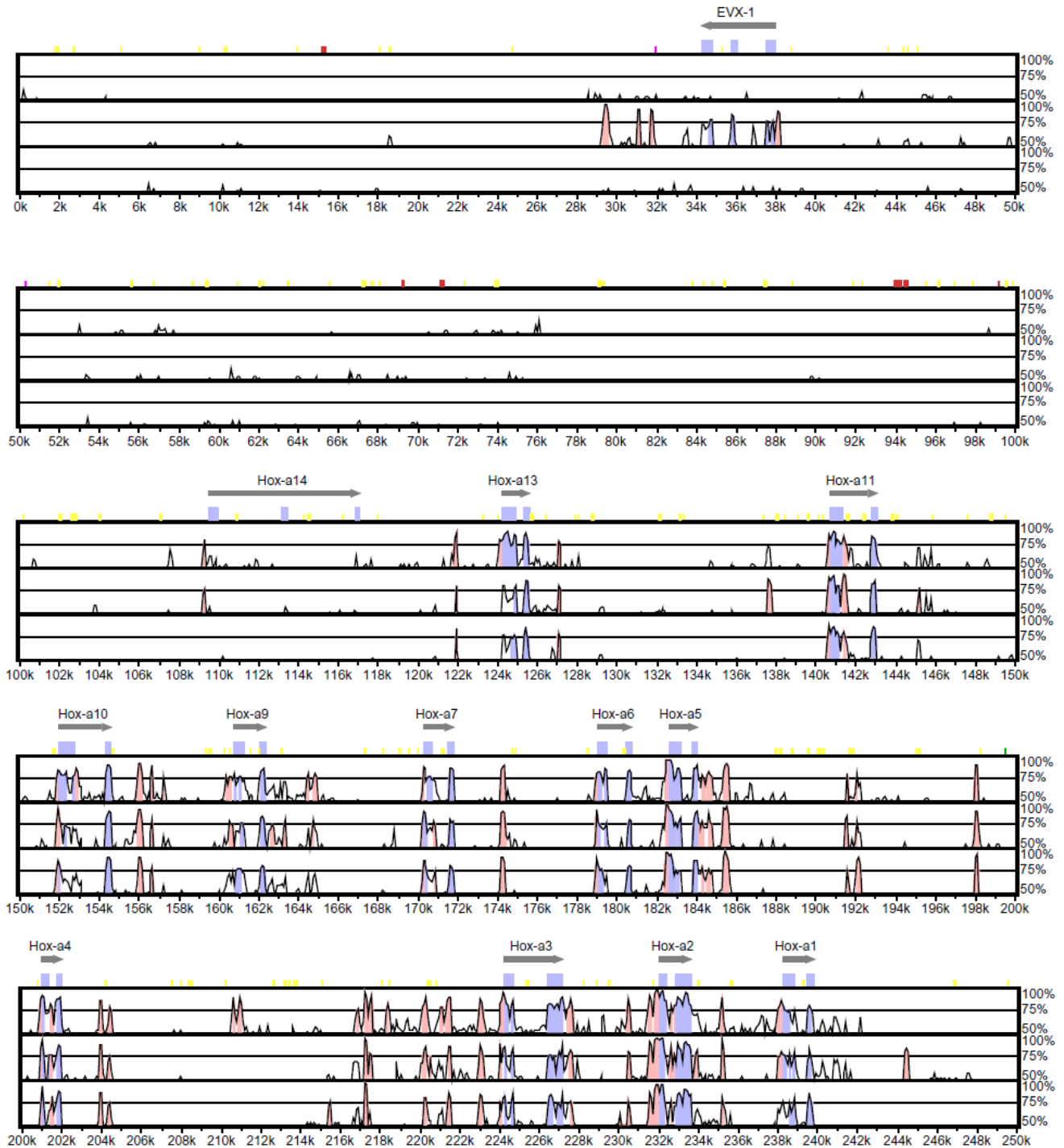
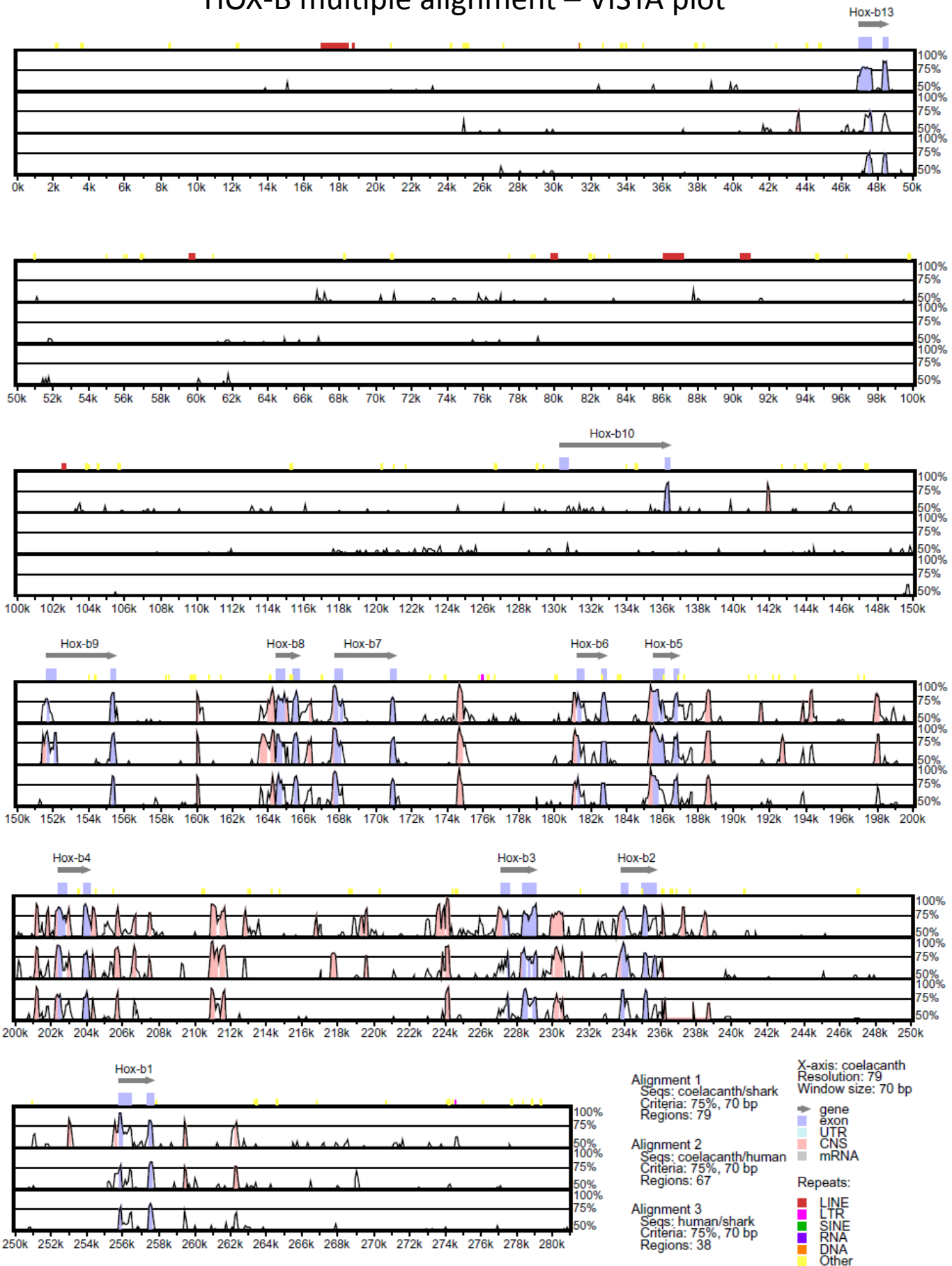


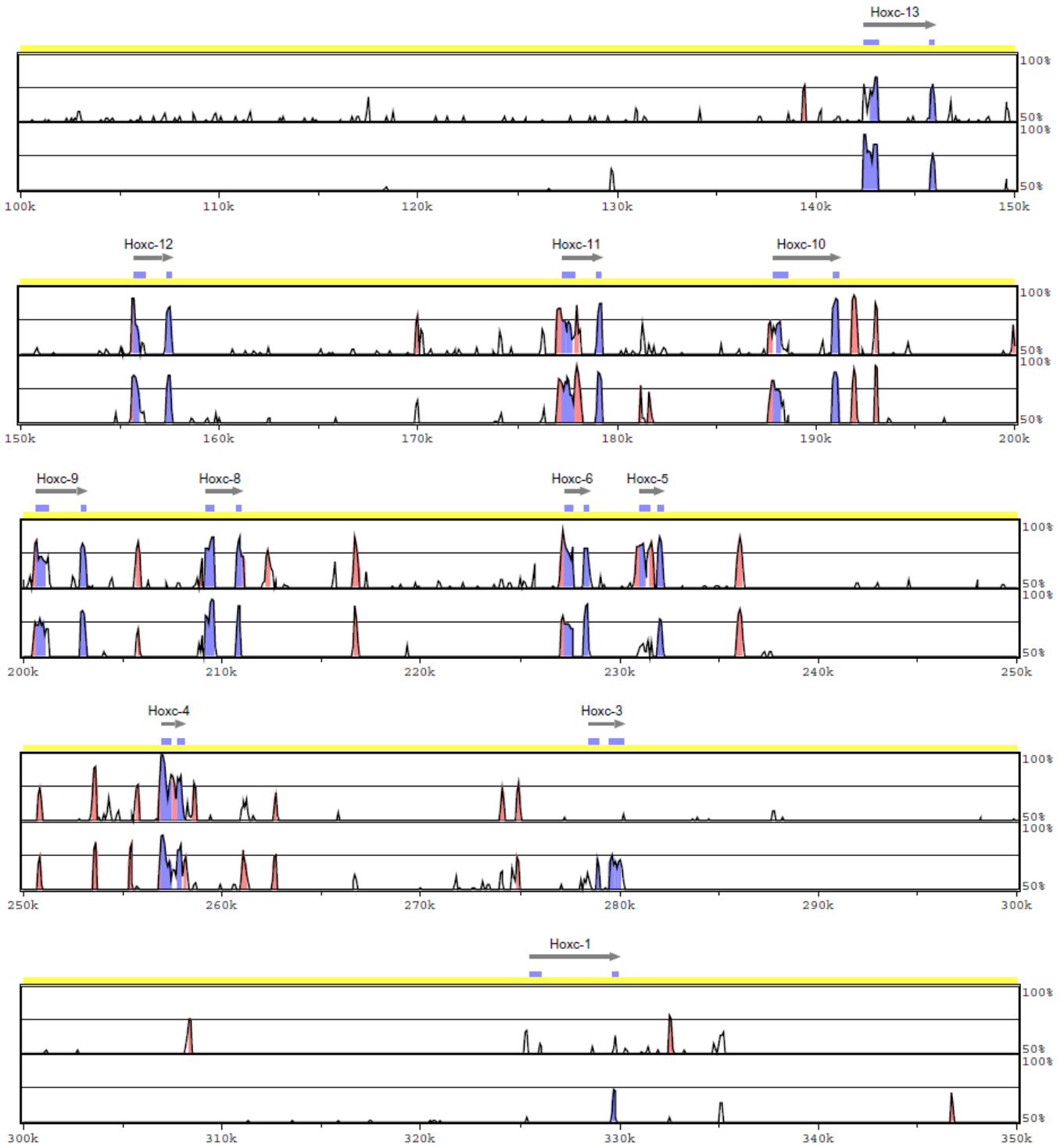
HOX-A multiple alignment – VISTA plot



HOX-B multiple alignment – VISTA plot



HOX-C multiple alignment – VISTA plot



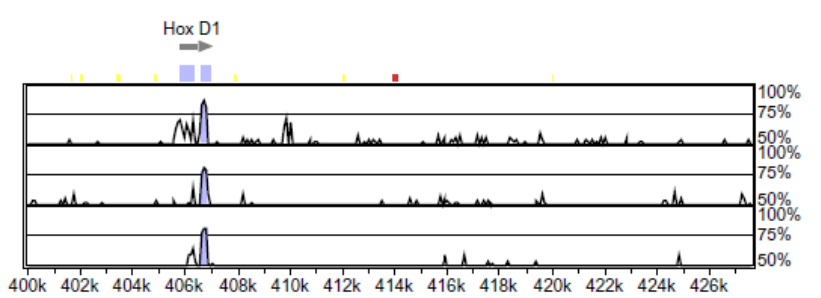
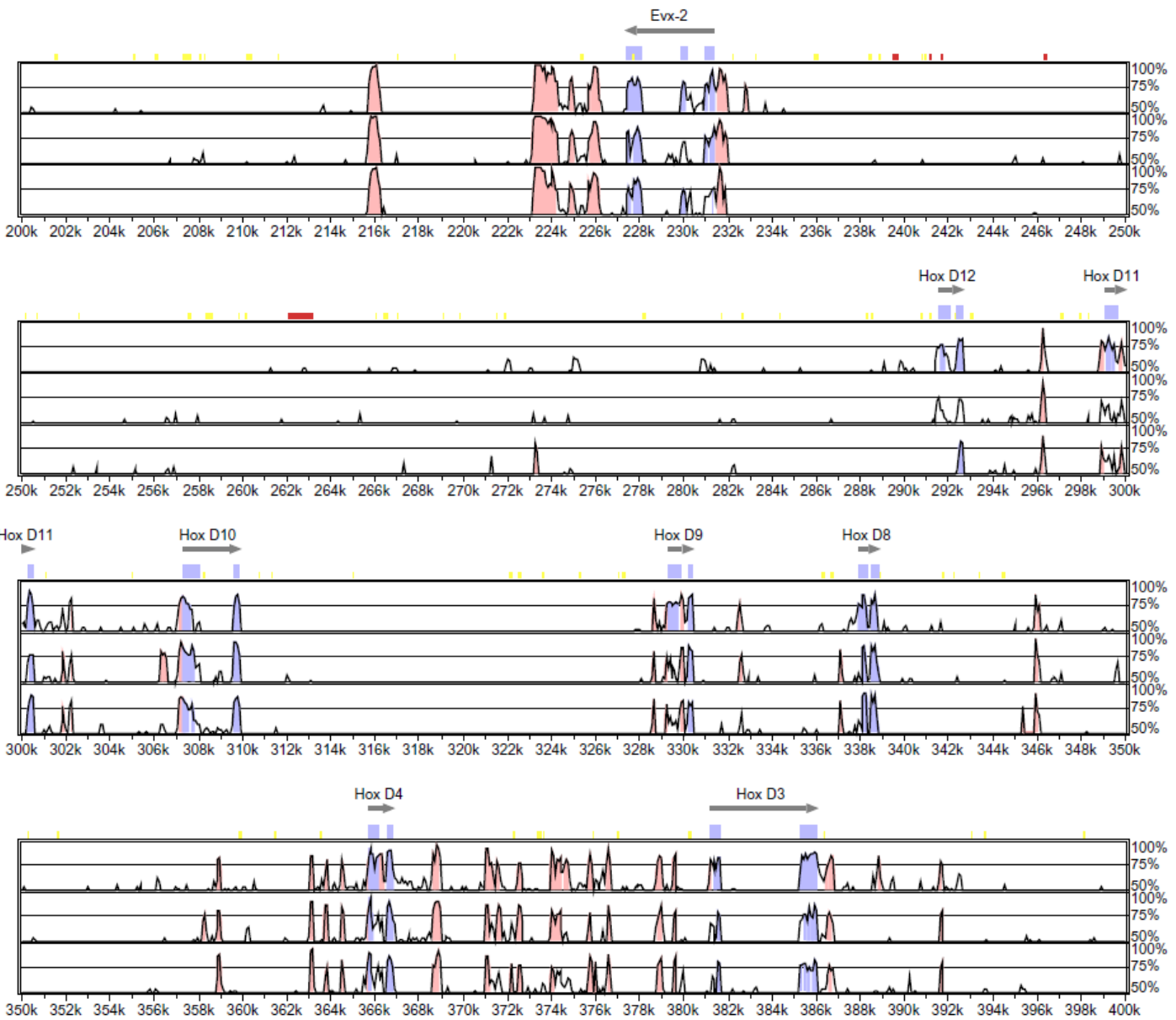
Alignment 1
Human
Human_HoxC_cluster (+)
1-264038
Criteria: 70%, 100 bp
Regions: 51

Alignment 2
Eshark
Eshark_HoxC_cluster (+)
1-274370
Criteria: 70%, 100 bp
Regions: 48

X-axis: Latimeria
Resolution: 79
Window size: 100 bp

→ gene
 ■ exon
 ■ UTR
 ■ CNS
 ■ mRNA
 Repeats:
 ■ LINE
 ■ LTR
 ■ SINE
 ■ RNA
 ■ DNA
 ■ Other

HOX-D multiple alignment – VISTA plot



Alignment 1
Seqs: coelacanth/shark
Criteria: 75%, 70 bp
Regions: 68

Alignment 2
Seqs: coelacanth/human
Criteria: 75%, 70 bp
Regions: 69

Alignment 3
Seqs: human/shark
Criteria: 75%, 70 bp
Regions: 60

X-axis: coelacanth
Resolution: 79
Window size: 70 bp

- gene
- exon
- UTR
- CNS
- mRNA

- Repeats:
- LINE
 - LTR
 - SINE
 - RNA
 - DNA
 - Other