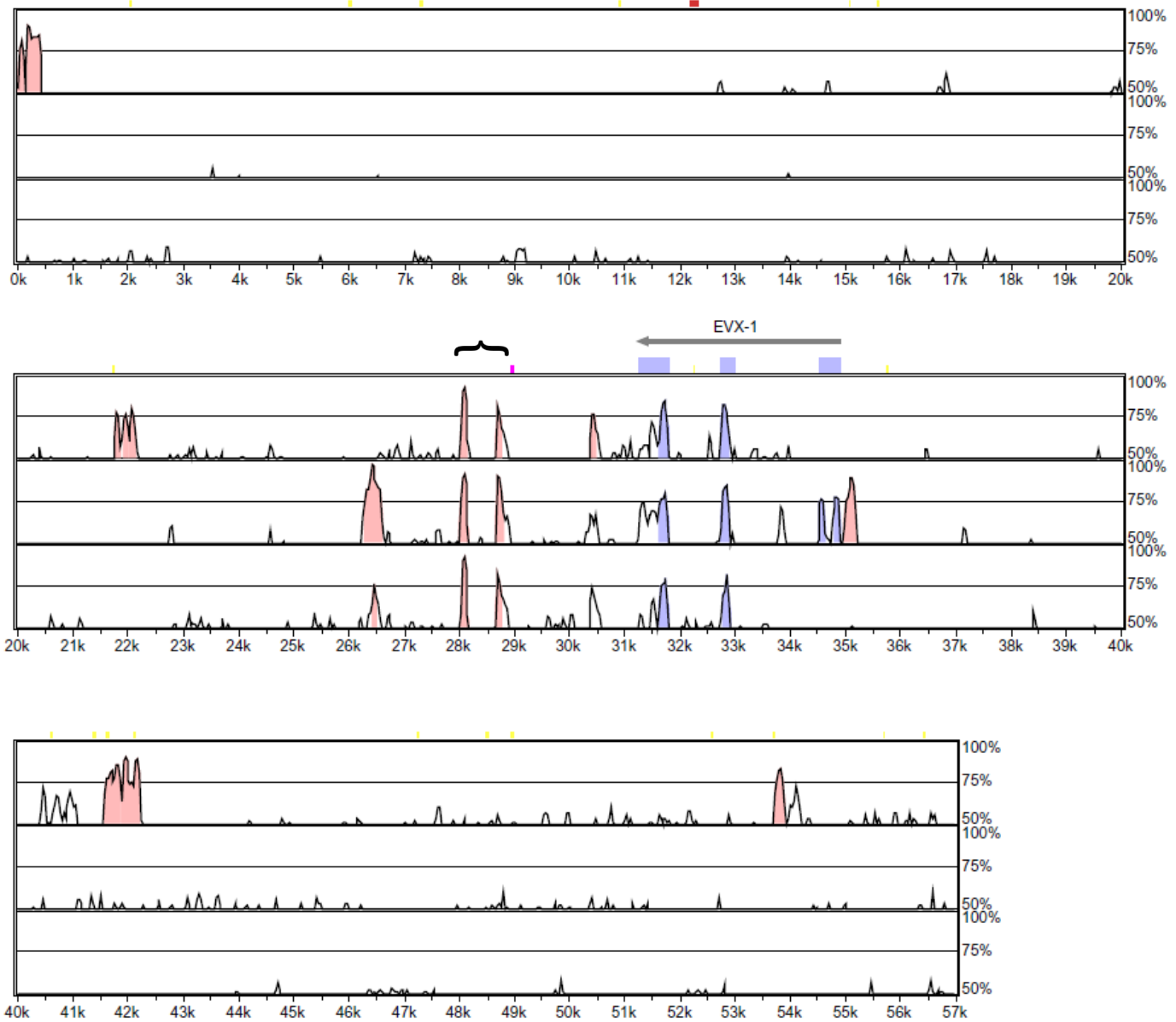


mVISTA global alignment of upstream region of HOXA and HOXD



Alignment 1
Seqs: coelacanth1/coelacanth2
Criteria: 75%, 70 bp
Regions: 13

Alignment 2
Seqs: coelacanth1/human1
Criteria: 75%, 70 bp
Regions: 8

Alignment 3
Seqs: coelacanth1/human2
Criteria: 75%, 70 bp
Regions: 5

X-axis: coelacanth1
Resolution: 31
Window size: 70 bp

→ gene
 ■ exon
 ■ UTR
 ■ CNS
 ■ mRNA

Repeats:

- LINE
- LTR
- SINE
- RNA
- DNA
- Other