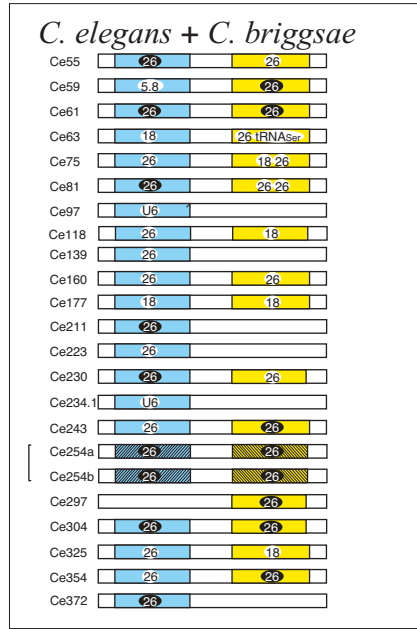
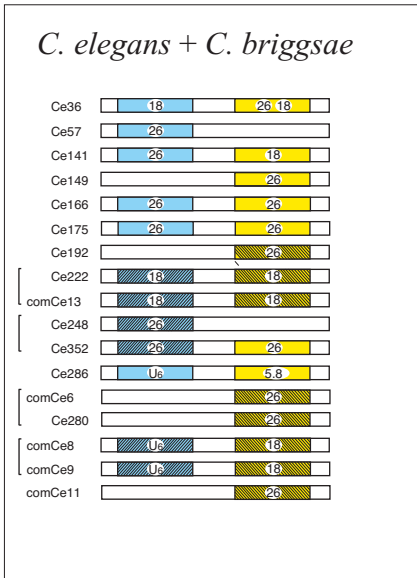


# Supplementary Figure 3

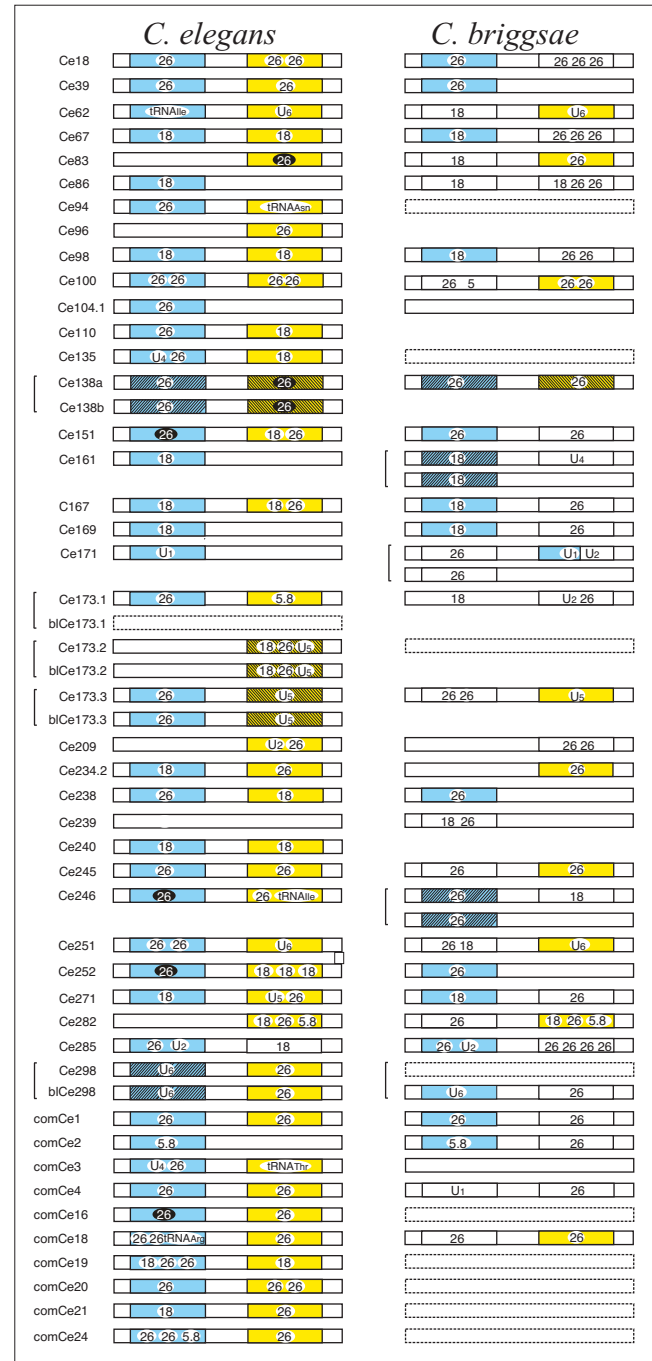
## A) C/D box snoRNAs



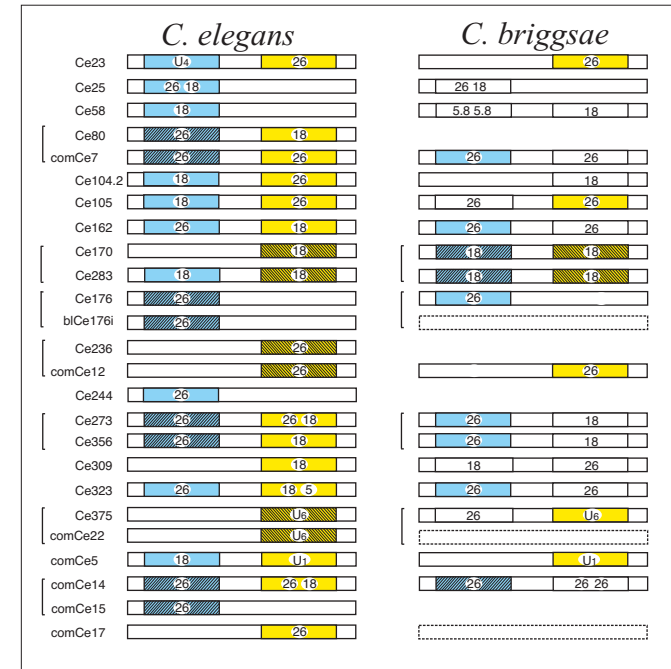
## B) H/ACA box snoRNAs



## C) C/D box snoRNAs



## D) H/ACA box snoRNAs



**Figure 3:** Computationally predicted snoRNA target sites for group I and II snoRNAs (Figure 1). (A) C/D and (B) H/ACA box snoRNAs for which the target site complementarities are identical in *C. elegans* and *C. briggsae*. (C) C/D box and (D) H/ACA box snoRNAs with different target site complementarity in both species. The left and right complementarity sequences in *C. elegans* are shown as blue or yellow boxes, respectively. Targets were found on 5S (5), 5.8S (5.8), 18S (18) and 26S rRNAs, U1, U2, U4, U5, U6 spliceosomal RNAs and in tRNAs. Brackets denote paralogs. Hatched boxes denote diverged snoRNA sequences. Diagonal slashes indicate identical target sites in paralogs. Blue and yellow boxes in *C. briggsae* indicate that the targets are identical to those in *C. elegans*. Note that all derived snoRNAs in *C. briggsae* are orthologous to *C. elegans*. Black circles denote experimentally verified targets (Higa et al. 2002). Target sites are also listed in Supplementl materials.